



PRO ARMOR

POLARIS RZR TRAIL DOORS (P081222) INSTALLATION INSTRUCTIONS

“Patent Pending”

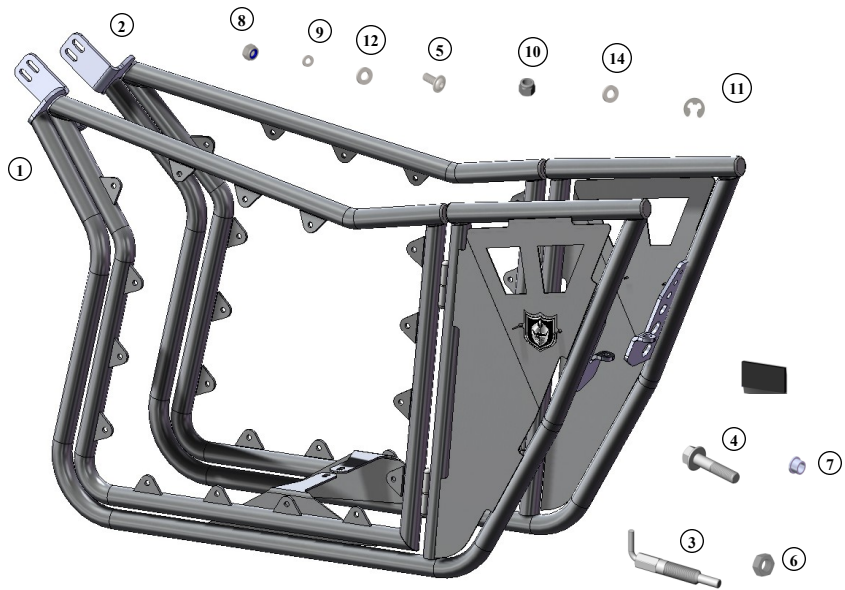
Please read these instructions carefully before installation to prevent injury to yourself or damage to your vehicle.

PARTS LIST:

PART	DESCRIPTION	QTY
1	DOOR FRAME (LEFT)	1
2	DOOR FRAME (RIGHT)	1

HARDWARE KIT:

PART	DESCRIPTION	QTY
3	LATCH	2
4	3/8-16 x 1.75" HEX FLANGED BOLT	4
5	M6 x 20mm BUTTON HEAD BOLT	30
6	5/8"-11 JAM NUT	2
7	3/8" NYLON SLEEVE	2
8	M6 NYLOC HEX NUT	30
9	6mm WASHER (SMALL)	30
10	3/8-16 NYLOCK HEX NUT	6
11	E-CLIP	4
12	6mm WASHER (LARGE)	30
13	VIBRATION STRIP	2
14	3/8" WASHER	2



CAUTION! During installation, the roll cage will be disconnected from the frame. Due to the construction of the vehicle, the frame can flax greatly, causing fitment and/or rubbing issues with the Doors. It is **HIGHLY** recommended to set the vehicle on 4 jack stands (taking full weight off the wheels) during the entire installation process.

PREPARATION:

1. Remove the seats from the vehicle, along with side nets and side bar system.
2. Remove the forward mounting bolt and nut from the B-pillar mount of the vehicle's roll cage. Perform procedure on both sides of the vehicle. See fig. 1 (Rear mounting point)
3. Remove and retain the bolt that attaches the vehicle's floor plastics to the seat mount bar. Perform procedure on both sides of the vehicle. See fig. 2 (Mid mounting point)
4. Remove the front mounting bolts and nuts from the A-pillar of the vehicle's roll cage. Perform procedure on both sides of the vehicle. See fig. 3 (Front mounting point)



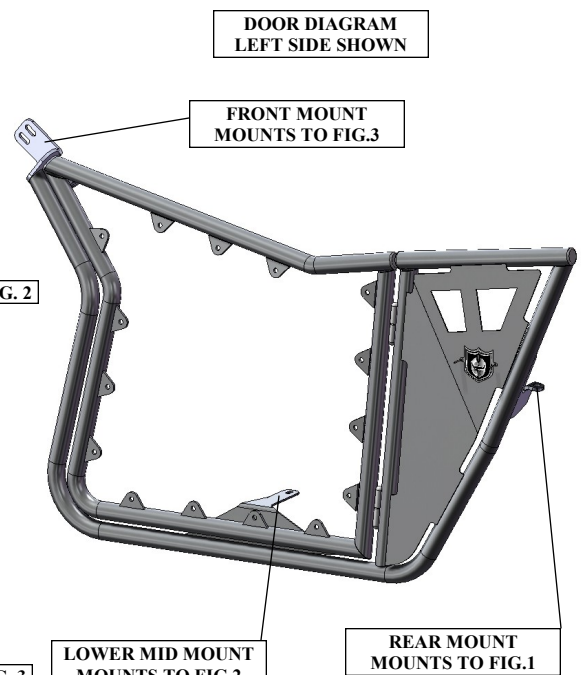
FIG. 1



FIG. 2



FIG. 3



DOOR DIAGRAM
LEFT SIDE SHOWN

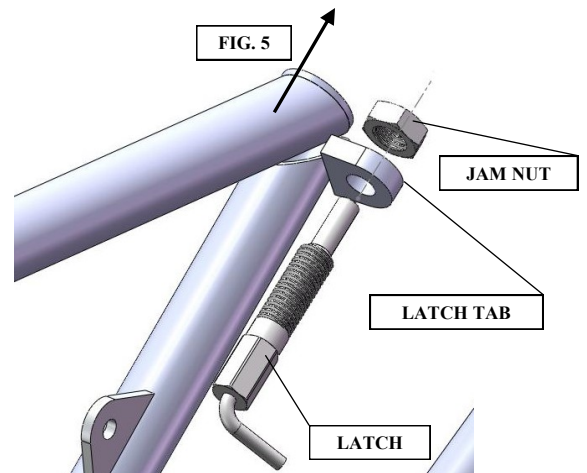
FRONT MOUNT
MOUNTS TO FIG.3

LOWER MID MOUNT
MOUNTS TO FIG.2

REAR MOUNT
MOUNTS TO FIG.1

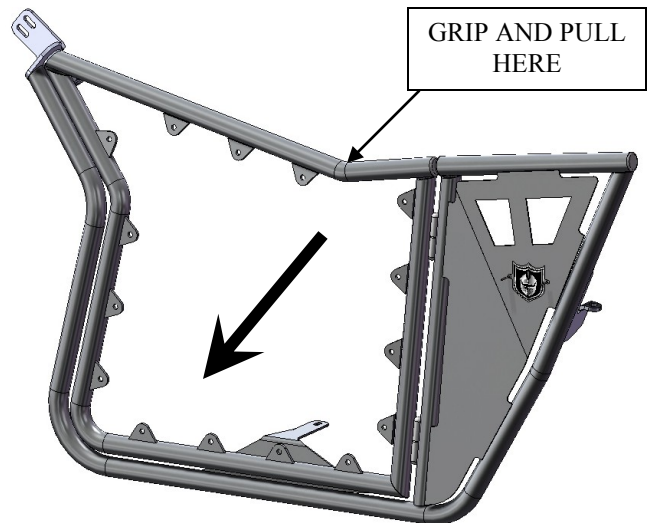
INSTALLATION:

1. Position the left side door in place on the left side of the vehicle. Align the rear mount of the door to the rear B-Pillar mounting point. Loosely install (1) of the retained front A-pillar mounting bolts (1) 3/8" washer and (1) 3/8-16 nuts.
2. Align the door's lower mid mount with the vehicle's mid mounting point and loosely re-install the retained mounting bolt from preparation step #3.
3. Align the (2) mounting holes of the door's front mount to the vehicle's A-Pillar front mounting location. Loosely install (2) 3/8-16 x 1.75" hex bolts and (2) 3/8-16 nuts. When all (3) mounting points are located with hardware loosely installed, you may shift the door to adjust it to your liking then tighten all mounting bolts and fasteners securing the left side door to the vehicle. Repeat procedure on the right side of the vehicle.
4. Locate the latch tab located on the inside at the front of the left door's swinging portion. Loosely thread in (1) latch into the latch tab and fasten the latch by loosely installing (1) jam nut as shown in Fig. 5. The latch will need to be adjusted so that the door is free to swing open and closed with the latch handle pulled back. Do so by threading the latch in or out of the latch tab.

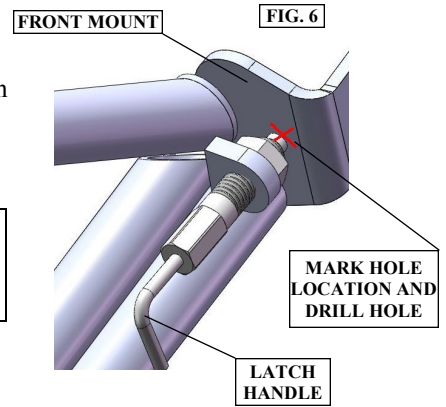


Due to the production variances and differing conditions of the frame, door adjustments may be necessary to avoid rubbing and proper fit. Ensure proper fit before continuing!

NOTE: If adjustment is necessary, confirm all mounting points are secured. Gently pull on the door frame as shown to adjust position of the door in the frame.

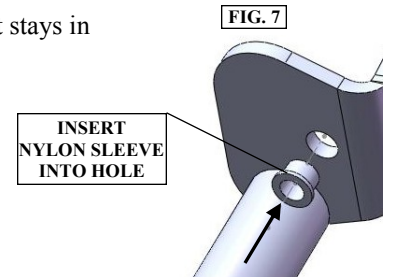


6. A hole will need to be drilled into the back side of the left doors front mount to lock the latch pin in place when the door is closed. Pull back the latch handle retracting the pin and swing the door to a closed position. Mark the back of the door's front mount where the latch pin will insert. If necessary, use an E-Clip at each hinge to remove any excess play in the hinge assembly. Drill a .50" diameter hole through the front mount at the marked location. See. Fig. 6



CAUTION! Hole drilled must be NO larger than .500" diameter to ensure proper latch engagement! Make sure correct drill size is used. Ensure the hole is drilled parallel to the latch pin!

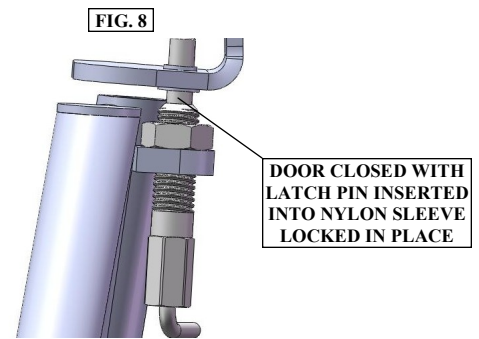
7. Insert (1) nylon sleeve into the drilled hole. Apply super glue to the nylon sleeve to ensure it stays in place. See. Fig. 7



8. Pull back the latch handle and swing the door closed. Release the latch handle engaging the latch pin into the nylon sleeve locking the door. See Fig. 8. Repeat procedures #4- 7 on the right side of the vehicle. Retract the latch pin by pulling back the latch handle whenever opening the door is required. Re-install the vehicle seats. For easier seat installation and removal, use ProArmor's **Seat Latch Relocator (P081015)**, sold separately)



CAUTION! Ensure latch pin FULLY engages nylon bushing before use. Latch pin should protrude 1/4" PAST nylon bushing. Adjust latch depth if necessary.



9. The remaining (30) M6 x 16mm button head bolts, (30) M6 nyloc nuts, (30) 6mm small washers and (330) 6mm large washers are to be used for installation of either the **(P081227 or P081228 Door Plates)** or the **(P081226 Door Nets)**.

MAINTENANCE:

Periodically check to see that the doors are properly installed. Re-torque mounting bolts when necessary. **Do not operate the vehicle if any bolts or fasteners are loose or missing from the doors. Do not operate the vehicle with door(s) open!**

CUSTOMER SERVICE:

For further information, please contact Pro Armor at 1-951-343-9270.